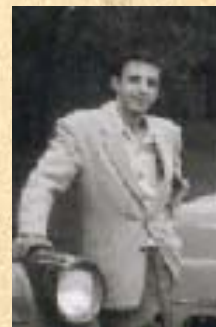
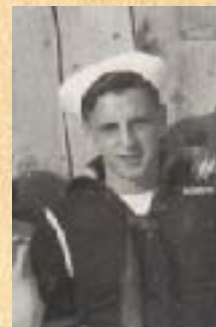


A LIFE IN PHOTOS

ARMOND RAYMOND HAMEL
of Rhode Island

April 8, 1926-Nov. 15, 1987



▲ *Raymond Hamel in the 1970s*





▲ Brothers Paul, Raymond, and Maurice Hamel in 1972

FATHERS & SONS

◀ Ray, Dorethy, Kevin, Donna, and Dawn Hamel in 1963

▶ Joseph Wilfred Hamel around 1925, Wilfred Joseph Hamel in the 1940s, and Armond Raymond Hamel in the 1970s



◀ Ray Hamel in 1954

▶ Wilfred Joseph Hamel around 1906, Armond Raymond Hamel in the 1920s, and Wayne Hamel around 1950



▲ Raymond Hamel around 1944

▶ Wilfred Joseph Hamel around 1911, Armond Raymond Hamel in the 1930s, and Kevin Hamel in the 1960s

