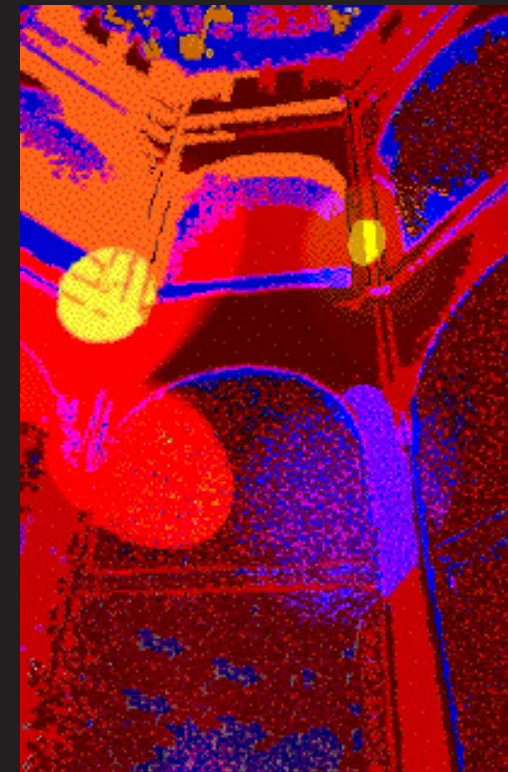
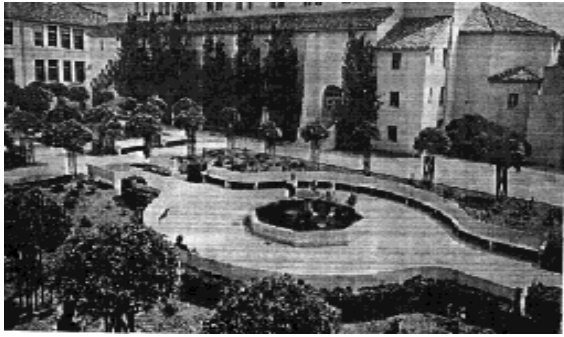


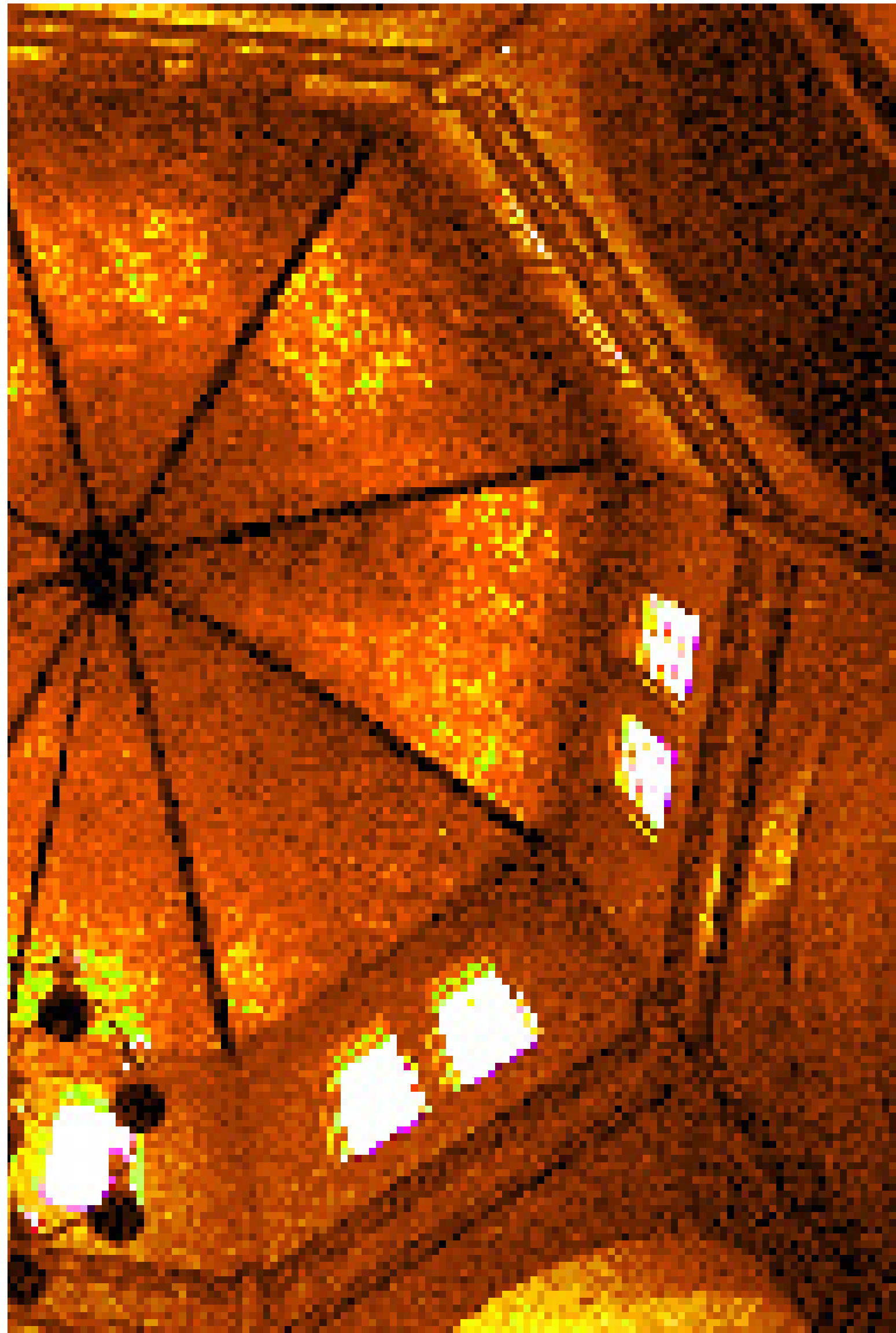
FAIRFAX FIRST



Auditorium
Restoration
Project



Located at the intersection of Fairfax and Melrose Avenues, Fairfax High School first opened its doors in 1924. The main entrance and centerpiece of the new campus was the magnificent four-story Rotunda. Flanked by an attached pair of two-story classroom wings, the Rotunda greeted students and campus visitors in a most gracious manner. The Rotunda also served as the pub-





lic entrance and grand lobby for the campus' elegant

new auditorium. Com-

pleted and dedicated in 1926, De-

Witt Swan Auditorium was named

in honor of the school's first boy's

vice-principal. In keeping, gener-

ally, with Spanish architectural tra-

dition, this stunning 1550-seat edi-

fice has a high, vaulted, mission-tile

covered roof.

The huge interior beams are, however, reminders of yet another piece of the city's rich history. In the late

1800's sailing ships from

around the world called at

the port of Los Angeles.

All of the auditorium's intri-

cately carved, hand painted

beams are parts of the keels

and beams of those ships.

Recognized

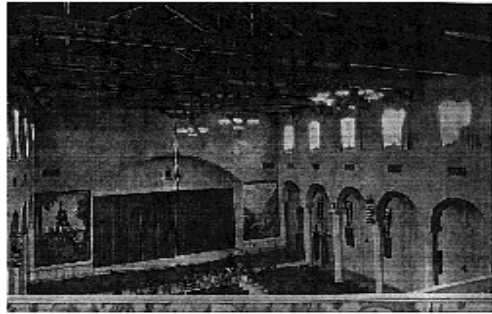




Swan Auditorium quickly became a popular venue for community sponsored

meetings, concerts and theater productions, in addition to the highly developed performing arts curriculum for which Fairfax High School became well-known.

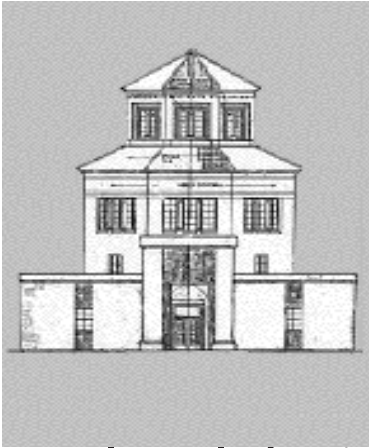
Famous Fairfax alumni who received early performing experience in student productions on stage



at Swan Auditorium would include Mickey Rooney, Ricardo Montalban, Herb Albert, Roger Wagner, David Jansen, Byron Allen, Phil Spector and many others.

was successful in saving them. In 1967 both were completely reinforced to ensure earthquake safety.





In the early 1980's, however, as a result of steadily reduced state education, school district level decisions were made to quickly phase out general performing arts funding in favor of a "magnet school" approach.

By 1985, the once exceptional arts program at Fairfax High School was all but eliminated. The once bright

Now, after nearly a decade of deterioration and disuse, plans have been developed to completely refurbish and revitalize this historic and irreplaceable architectural and cultural gem. Under the direction of both Fairfax High School and Fairfax Community Adult School (with over 10,000 students attending day and evening classes on both the main campus and 21 community locations), Fairfax High School's Swan Auditorium will be reintroduced into the cultural life of Southern California as: SWAN CENTER for the PERFORMING ARTS.

With the stage and backstage facilities

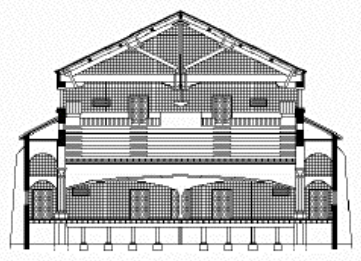


completely redesigned,
leading edge state-of-
the-art technical up-
grades for lighting and sound, and
specific cosmetic attention given to
the main auditorium and rotunda,
this grand lady of the arts will leap
into the 21st century as a 1550-seat
performing arts center without
equal in Los Angeles.

will be equipped to host lo-
cal, national and international
performing artists ranging
from symphony orchestras,
opera companies, classical bal-
lets, musicals and legitimate
theatre, to chamber music
and solo recitals, modern and
ethnic dance, jazz and pops
concerts, awards ceremonies,



Stage & Backstage



- A four-level elevator orchestra pit/stage extension.

- A below stage level orchestral, choral and dance

rehearsal hall, office space, storage facilities and costume workshop.

- State-of-the-art lighting and sound systems.

- Full-stage removable acoustic performance shell.

- Expanded backstage wing space with stage level loading dock.

- Redesigned and enlarged soloist and large ensemble dressing rooms, make-up and restroom facilities.

- Completely updated stage craft area for set design and construction.

lines.

- A fully updated air conditioning/heating system.

- Architecturally appropriate lighting upgrades.

- Handicapped access and wheelchair seating areas.

Upgraded and expanded restroom facilities.

- A greatly enlarged lobby area designed to high-



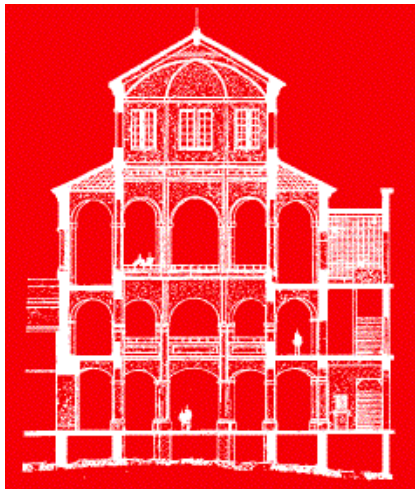
light the architectural significance of the Rotunda.



While the historic Fairfax/Melrose District has experienced a steady influx of welcome visitors, the resulting traffic, parking problems and crime potential, as well as the areas's generally deteriorating building facades have been a great concern to the entire community. In a bold, far-reaching move, the Los Angeles City Council responded in early June, 1996, by officially designating the Fairfax/Melrose District a Business Improvement District.

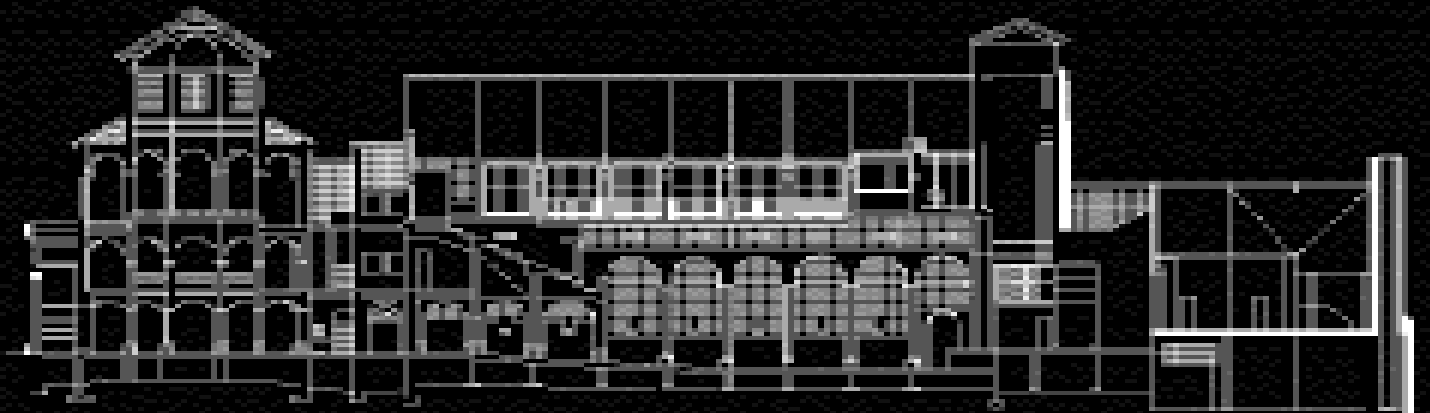
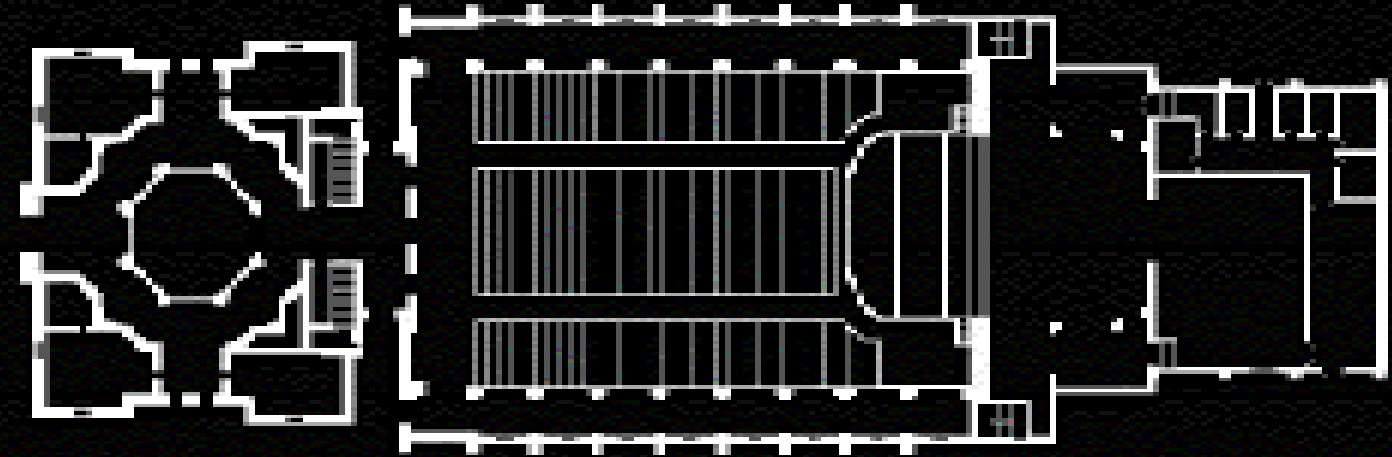
planned street beautification, parking facilities, increased public safety, and special business loans to revitalize the local economy. In short, being designated a Business Improvement District provides an area a complete face-lift and financial transfusion. This exciting process is exactly what gave new commercial and cultural life to the once distressed area of Old Town Pasadena and Santa Monica's Third





residents, business and civic leaders alike, the very center of this major new Business Improvement District is to be

the intersection of Fairfax & Melrose, the exact location of the newly proposed Swan Center for the Performing Arts, on the campus of Fairfax High School. Swan Center will, in effect, become the central jewel and point of greatest focus in LA's newest commercial and cultural arts district.





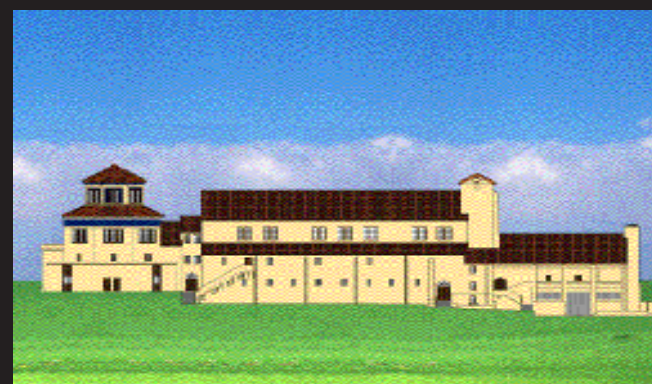
In the few months since the inception of this project, certain key performing arts organizations have been given a tour of the present facility, and plans for Swan's revitalization were shared.

Without exception, the entire project has been met with enthusiastic support. "How soon will it be ready so we can perform here?" was the common response. Included in this growing list of supporters is:

- Guild Opera Company
- Gay Men's Chorus of Los Angeles
- Bel Canto Symphony Orchestra
- California Youth Theatre
- Southern California Early Music Society
- Venice Youth Pops Orchestra

Project Personel

- Paul Hamel, Principal, Fairfax Community Adult School
- Russell Fox, Executive Director Swan Auditorium Restoration Project, Performing Arts Coordinator, Fairfax Extension/Community Adult School
- Walter Zell, Master Architect & Structural Consultant



Your Gift for the 21st Century will make this all possible.

Once the center of performing arts for both school and community, Swan Auditorium has deteriorated badly over the last decade, and is in serious need of restoration.

Alumni and Friends of Fairfax has adopted this project as its major focus. Revenue from **Swan Center for the Performing Arts** will dramatically increase funds for all designated needs.

For \$250, become a **Patron**. Your name will be permanently inscribed in the Rotunda.

For \$500, become a **Donor**. You receive priority ticket selections, and your name inscribed on the Donors Wall of Honor.

For \$1,000, become a **Benefactor**. Buy a fully restored seat with brass plaque commemorating your gift, and priority ticket selection.

For \$10,000, and up, become a **Founder**. You receive priority parking, priority ticket selections, and your name in gold leaf prominently inscribed in the Founders Court Grand Foyer.



Don't shut the door..
Fairfax first!