

FATHERS & SONS

Hamel Family

Ever wonder what your ancestors looked like? Did they look like you? Do you look like them? Will you look like them when you get older? Examine the photos in this chapter and decide for yourself.

The first part of this chapter presents photos taken of Hamel and Landry men and women from 1906 to 2006. The photos represent only direct descendants: fathers to sons and mothers to daughters.

Later in the chapter, there are photos of grandfathers and grandsons, grandmothers and granddaughters, and first cousins.

Note: To add photos or make changes to this chapter, contact Paul Hamel at 1133 North Clark Street, Unit 101, West Hollywood, CA 90069 or e-mail at "paulhamel@sbcglobal.net" or phame1@lausd.k12.ca.us" or call (310) 657-8814



FATHERS & SONS

▶ Joseph Wilfred Hamel around 1906, Wilfred Joseph Hamel in 1923, George Leo Hamel around 1953, Stephen Hamel in the 1980s, and Steven Hamel Jr. around 2004



Hamel Family Men

Hamel Family men from 1906 to 2006



◀ Joseph Wilfred Hamel around 1911, Roland Hamel in the 1920s, and René Hamel in the 1950s



▶ Wilfred Joseph Hamel in the 1920s, George Leo Hamel in the 1930s, Steven Hamel in the 1960s



◀ Joseph Wilfred Hamel around 1911, Roland Hamel in the 1950s, and René Hamel in the 1960s

▶ Wilfred Joseph Hamel around 1906, George Leo Hamel in the 1930s, Steven Hamel in the 1950s, and Steven Hamel Jr. around 2002



◀ Joseph Wilfred Hamel around 1911, Roland Hamel in the 1960s, and René Hamel in the 1980s

▶ Roland Hamel around 1906, René Hamel in the 1930s, Roland Hamel around 1911, and René Hamel in the 1940s.





◀ Joseph Wilfred Hamel around 1911, Wilfred Joseph Hamel in the 1950s, Maurice Hamel in the 1980s, Glenn Hamel in the 1980s ▶

Wilfred Joseph Hamel around 1906, Armond Raymond Hamel in the 1930s, and Wayne Hamel in the 1950s



◀ Joseph Wilfred Hamel around 1923, Wilfred Joseph Hamel in the 1950s, Maurice Hamel in the 1990s, and (Joey) Hamel in the 1990s ▶

Wilfred Joseph Hamel around 1911, Armond Raymond Hamel in the 1930s, and Kevin Hamel in the 1960s



◀ Joseph Wilfred Hamel around 1911, Wilfred Joseph Hamel around 1923, Maurice Hamel in 1956, and Mark Hamel in the 1990s ▶

Joseph Wilfred Hamel around 1920, Wilfred Joseph Hamel in 1923, and Paul Joseph Hamel in 1967



◀ Wilfred Joseph Hamel in 1908 and Paul Joseph Hamel in 1946, Wilfred Joseph Hamel around 1925 and Paul Joseph Hamel in the 1960s ▶

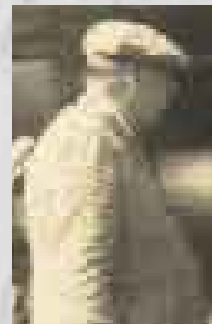
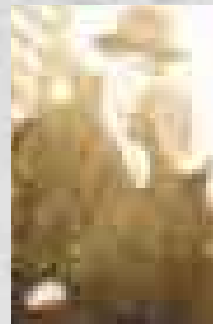
Joseph Wilfred Hamel around 1920, Wilfred Joseph Hamel in the 1950s, and Paul Joseph Hamel in 2004



A LIFE IN
PHOTOS

JOSEPH WILFRED HAMEL

1869 TO 1930





▲ This couple is either the parents of Joseph Wilfred Hamel (Alfred and Odélie Lamont) or his father and mother-in-law (The Jetté Family)



▲ Joseph Wilfred and Rosa (Jetté) Hamel in 1911



▲ Joseph Wilfred Hamel in 1926



▲ Joseph Wilfred Hamel in the late 1920s

▶ Joseph Wilfred Hamel around 1911, Roland Hamel in the 1920s, and René Hamel in the 1950s



▼ Joseph Wilfred Hamel in 1926, Wilfred Joseph Hamel in the 1926, George Leo Hamel in the 1940s, and Steven Hamel in the 1980s



FATHERS & SONS

▶ Joseph Wilfred Hamel around 1925, Wilfred Joseph Hamel in the 1940s, and Armond Raymond Hamel in the 1970s



▶ Joseph Wilfred Hamel around 1911, Wilfred Joseph Hamel in the 1950s, Maurice Hamel in the 1990s, and Glenn Hamel in the 1980s

▶ Joseph Wilfred Hamel around 1920, Wilfred Joseph Hamel in the 1950s, and Paul Joseph Hamel in 2004



A LIFE IN PHOTOS

WILFRED JOSEPH HAMEL

1904 TO 1956



▲ Wilfred Hamel (bottom right) with brother Roland (top left), sisters Loretta (top right), and Rita (bottom left)

▲ Wilfred Hamel in 1955





▲ *Wilfred and Yvonne (Landry) Hamel in 1926*



FATHERS & SONS

◀ *Joseph Wilfred Hamel in 1926, Wilfred Joseph Hamel in the 1950s, Maurice Hamel in the 1990s, and Joseph (Joey) Hamel in the 1990s*



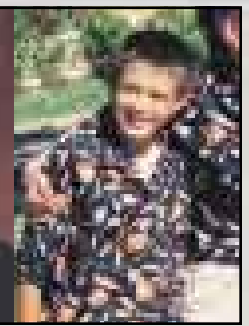
◀ *Joseph Wilfred Hamel around 1911, Wilfred Joseph Hamel around 1923, Maurice Hamel in 1956, and Mark Hamel in the 1990s*



▶ *Joseph Wilfred Hamel around 1920, Wilfred Joseph Hamel in the 1950s, and Paul Joseph Hamel in 2004*



▶ *Joseph Wilfred Hamel around 1906, Wilfred Joseph Hamel in 1926, George Leo Hamel around 1953, Stephen Hamel in the 1980s, and Steven Hamel Jr. around 2004*



A LIFE IN PHOTOS

ROLAND HAMEL

1901 TO 1969



▶
*(Standing) Mr.
Bergeron, Joseph
Wilfred Hamel (Sitting:
Cora (Bergeron) and
Roland Hamel in the
1920s*

▼ *Roland Hamel in
the 1930s*





▲ Roland, Cora, Jenette, René, and Rita Hamel in the 1930s



FATHERS & SONS

◀ Joseph Wilfred Hamel around 1911, Roland Hamel in the 1920s, and René Hamel in the 1950s



◀ Joseph Wilfred Hamel around 1911, Roland Hamel in the 1950s, and René Hamel in the 1960s



▲ Roland and Cora Hamel in the 1950s



◀ Joseph Wilfred Hamel around 1911, Roland Hamel in the 1960s, and René Hamel in the 1980s

◀ Roland Hamel in the 1950s



◀ Roland Hamel in 1906 and his son Rene Hamel in the 1930s

▶ Roland Hamel around 1911 and his son Rene Hamel in the 1940s



A LIFE IN PHOTOS

RENE HAMEL

BORN: 1929



▲ René Hamel in the 1930s

▼ René Hamel in the 1950s





▲ René and Rita Hamel in the 1950s



▲ René and Rita Hamel in the 1950s



▲ René and Rita Hamel with daughters in the 1980s

▼ René Hamel's daughters



▲ René Hamel with cousin, Leo Hamel, in the 1930s, 1950s, and 1990s

◀ Joseph Wilfred Hamel around 1911, Roland Hamel in the 1950s, and René Hamel in the 1960s



FATHERS & SONS

◀ Joseph Wilfred Hamel around 1911, Roland Hamel in the 1960s, and René Hamel in the 1980s

A LIFE IN PHOTOS

**ARMOND RAYMOND
HAMEL**

April 8, 1926-Nov. 15, 1987



▲ *Raymond Hamel in the 1970s*





▲ Brothers Paul, Raymond, and Maurice Hamel in 1972

◀ Ray, Dorethy, Kevin, Donna, and Dawn Hamel in 1963



FATHERS & SONS

▶ Joseph Wilfred Hamel around 1925, Wilfred Joseph Hamel in the 1940s, and Armond Raymond Hamel in the 1970s



▲ Raymond Hamel around 1944

◀ Ray Hamel in 1954

▶ Wilfred Joseph Hamel around 1906, Armond Raymond Hamel in the 1920s, and Wayne Hamel around 1950



▶ Wilfred Joseph Hamel around 1911, Armond Raymond Hamel in the 1930s, and Kevin Hamel in the 1960s



A LIFE IN PHOTOS

GEORGE LEO HAMEL

BORN: April 12, 1929



▲ Leo Hamel around 1940



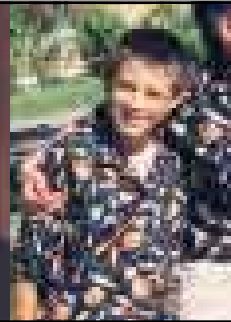
▲ Leo Hamel around 1952





FATHERS & SONS

▶
Joseph Wilfred Hamel around 1906, Wilfred Joseph Hamel in 1923, Leo Hamel around 1953, Stephen Hamel in the 1980s, and Steven Hamel Jr. around 2004



▲ Leo and Cora (Coutcher) Hamel in 1953



▶
Wilfred Joseph Hamel in the 1920s, George Leo Hamel in the 1930s, Steven Hamel in the 1960s



▼
Wilfred Joseph Hamel around 1906, Leo Hamel in the 1930s, Steven Hamel in the 1950s, and Steven Hamel Jr. around 2003



▲ Leo Hamel in the 1950s



A LIFE IN PHOTOS

MAURICE HAMEL

BORN: May 15, 1935



▲ Maurice Hamel around 1940



▲ Maurice Hamel in the 1990s





FATHERS & SONS

◀ Maurice and Virginia (Dicristefaro) Hamel in 1956

▶ Joseph Wilfred Hamel around 1911, Wilfred Joseph Hamel in the 1950s, Maurice Hamel in the 1980s, Glenn Hamel in the 1980s



▶ Joseph Wilfred Hamel around 1923, Wilfred Joseph Hamel in the 1950s, Maurice Hamel in the 1990s, and Joseph (Joey) Hamel in the 1990s



▶ Joseph Wilfred Hamel around 1911, Wilfred Joseph Hamel around 1923, Maurice Hamel in 1956, and Mark Hamel in the 1990s



◀ Maurice Hamel in the 1930s and son Mark Hamel in the 1960s

▶ Maurice Hamel in the late 1930s and son Joseph (Joey) in the 1960s



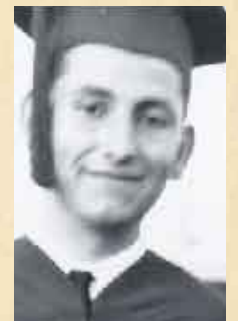
▶ Maurice Hamel around 1940 and son Mark Hamel in the 1960s



**A LIFE IN
PHOTOS**

PAUL JOSEPH HAMEL

BORN: NOVEMBER 29, 1945





FATHERS & SONS

▶
Joseph Wilfred Hamel around 1911, Wilfred Joseph Hamel in 1923, and Paul Joseph Hamel in 1967



▶
Joseph Wilfred Hamel around 1920, Wilfred Joseph Hamel in the 1950s, and Paul Joseph Hamel in 2004

